

CA185

Date: December 13, 1999

Ref: CA185-0.DOC

Revision: 01

Author: SM

Cable code	CA185
Description	PLC Port to Hitachi EH-Micro – Port 2
Type of Communication	RS-422
Panel Connector	D-sub type 15S
PLC Connector	D-sub type 15P
Notes	

table 1. Cable description

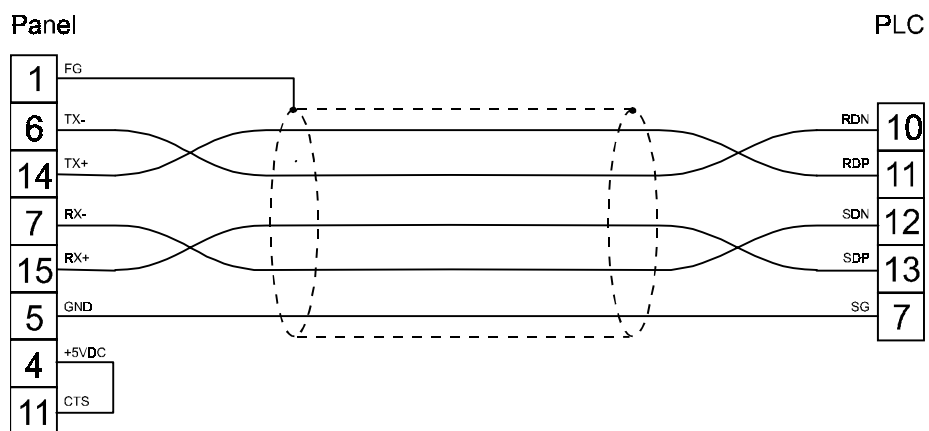


figure 1. Cable diagram